

FLSON



volume 2

HIGH LINE

timeless design | modern classics

Highline

The High Line, New York's unofficial outdoor fashion runway. A place for all to strut their stuff, allowing anyone to make a statement as they stroll. Universal and democratic, anyone can find themselves easily a part of the scenery, and the ultimate inspiration for our Highline Collection.



The Collection

An undercurrent of natural confidence gives way to elegant poses, modern movement and contemporary bodies. Clean and abstract details lend to present-day fits in a diverse range of sizes and fashion-forward pose options.



Ultimate Versatility

A modern component-based system that utilizes different static and articulated arm sets, swivel heads, and stylized hands and feet, offering flexible posing options.



Quiet Sophistication. Elegant Ease. Calm Confidence.



A universal & democratic approach with clean lines and shapes that feels accessible for all brands.





Contemporary
Cohesiveness

Earnest and honest
poses that are
designed to
stand out alone,
or within group
arrangements.





Diverse Sizing

She/Her Sizing from 2-18
He/Him Sizing from 40-48





An Exploration in Diversity

Presented in True-to-Hue, a selection of diverse and realistic tones.

Collection is available in custom and Essential Finishes. <https://www.fusionspecialties.com/mannequin-finishes>

From left to right: Shown in Cinnamon, Iced Mocha, Bisque, & Jute.



Sophisticated.
Elegant. Confident.

From left to right: Shown in
Java, Clay, & Coffee.





Turning Heads

From left to right:
Neck Cap
Articulating Head
Swivel Head
Featured Head

The ability to angle the head elicits the perfect emotion from each form.

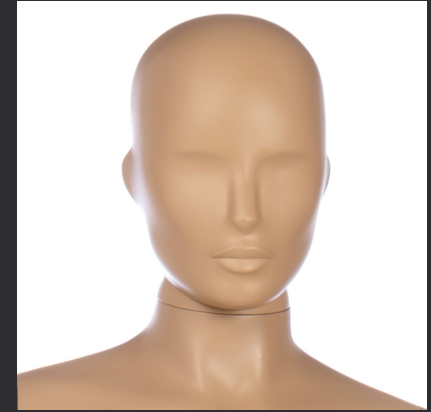
Featured Heads



Head A



Head B



Head C



Head D



Head E

Designed by distilling the most common traits shared by all, Highline's head selection offers a truly diverse and inclusive experience.

The featured heads allow the collection to be fully accessorized from head to toe.



Disrupting traditional
retail norms.

From left to right: Shown in
Cinnamon, Java, & Iced Mocha.

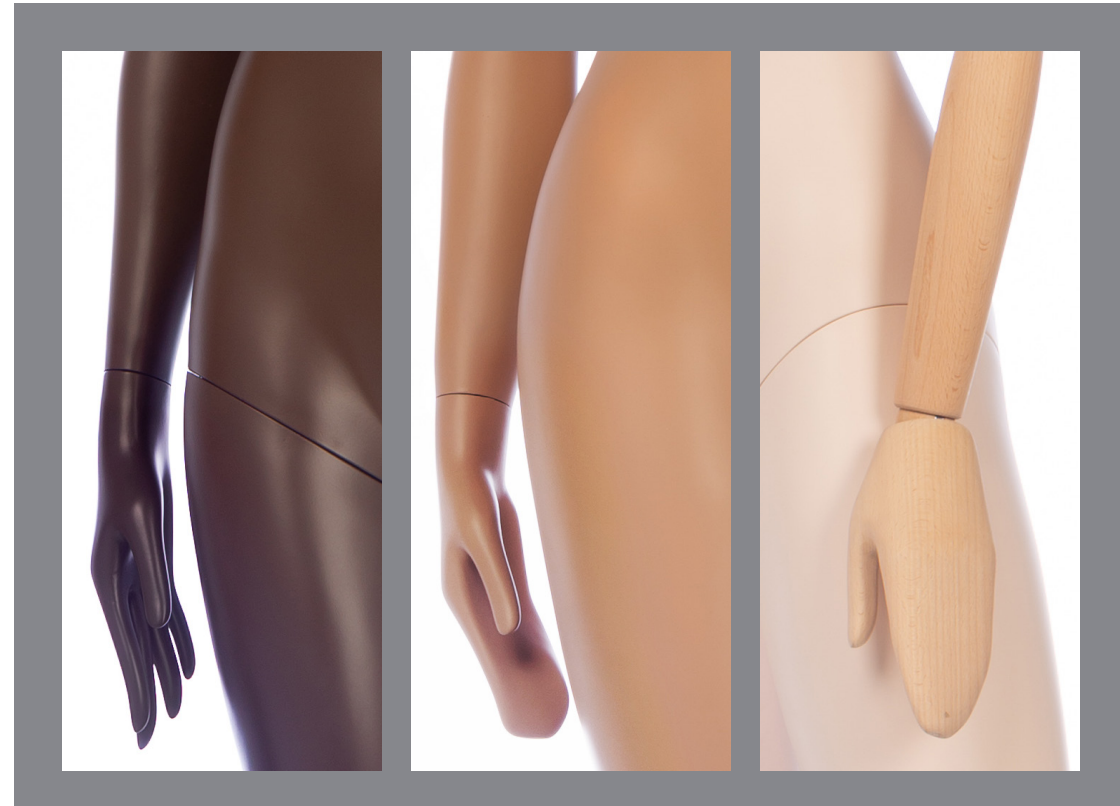
Interchangable Hands



Abstract

Paddle

Articulated Paddle



From elegant abstract hands to articulated paddle hands, Highline provides subtle details that make all the difference.

Articulated Male

Static Male

Articulated Female

Static Female

Flexible Arm Options

With easily interchangeable armsets, the look of the Highline collection can be dramatically changed in an instant.



Stylized Feet



The thoughtful foot design of the Highline Collection allows for presentation with or without footwear.

Timeless Design.
Modern Classics.

This is Highline.

From left to right: Shown in
Bisque, & Sand.



Product Information



2
Height: 74.75"
Bust: 32.75"
Waist: 25.5"
Hip: 33.75"
Inseam: 33"
Shoe: 7
Heel Rise: 4"



6
Height: 74.25"
Bust: 33.75"
Waist: 27"
Hip: 37.25"
Inseam: 34"
Shoe: 7
Heel Rise: 4"



10
Height: 74.5"
Bust: 38"
Waist: 30.5"
Hip: 38.25"
Inseam: 32"
Shoe: 7
Heel Rise: 4"

Product Information



14

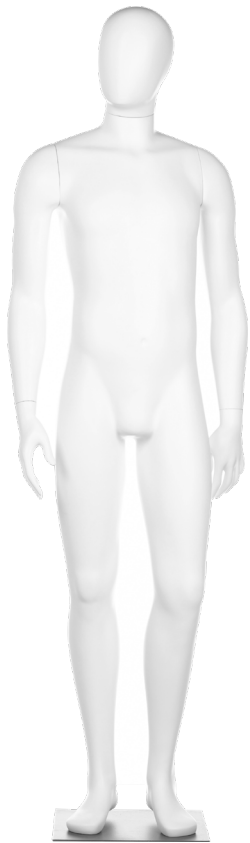
Height: 76"
Bust: 40.25"
Waist: 34.25"
Hip: 45"
Inseam: 33"
Shoe: 7
Heel Rise: 4"



18

Height: 76.25"
Bust: 45.75"
Waist: 38"
Hip: 46"
Inseam: 32.5"
Shoe: 8
Heel Rise: 4"

Product Information



40
Height: 75"
Chest: 38.5"
Waist: 32"
Hip: 38"
Inseam: 32"
Shoe: 10
Heel Rise: .5"



44
Height: 74.75"
Chest: 41.25"
Waist: 35.25"
Hip: 40"
Inseam: 32.5"
Shoe: 10
Heel Rise: .5"



48
Height: 74.5"
Chest: 46.25"
Waist: 40"
Hip: 42.75"
Inseam: 32"
Shoe: 10
Heel Rise: .5"



HIGH LINE

www.fusionspecialties.com